

OIML test certificate no. D09-06.07

OIML C of C no. R60/2000-CNI-06.02

NTEP certificate no. 06-099A1



- Stainless steel IP67 "S" type load cell
- Tension and compression applications
- Suitable for hanging, hopper and other weighing devices
- Also available in imperial capacities and dimensions

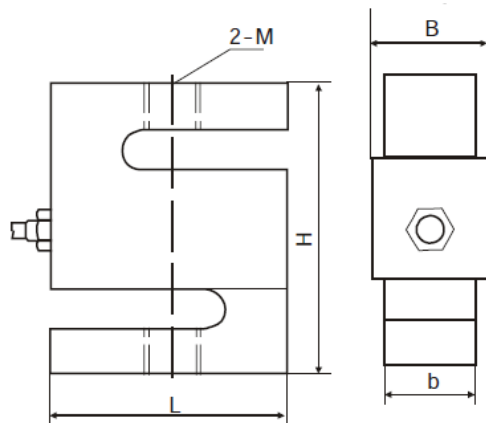


Capacity	Accuracy	Part-Number
50 kg	Cx	B3G-Cx-50kg-6B
100 kg	Cx	B3G-Cx-100kg-6B
250 kg	Cx	B3G-Cx-250kg-6B
500 kg	Cx	B3G-Cx-500kg-6B
1.0 t	Cx	B3G-Cx-1.0t-6B
2.5 t	Cx	B3G-Cx-2.5t-6B
5.0 t	Cx	B3G-Cx-5.0t-6B
7.5 t	Cx	B3G-Cx-7.5t-6B
10 t	Cx	B3G-Cx-10.0t-6B

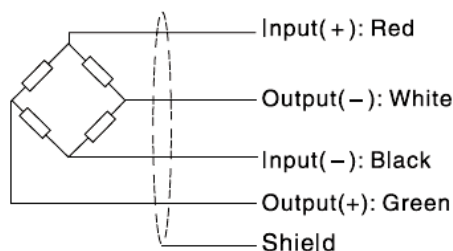
Specification:

Accuracy class	Output sensitivity (= FS)	C3		C4
		3.0 ± 0.008		
Maximum capacity (E _{max})	t	0.05/0.1/0.25/0.5/1/2.5/5/7.5/10		
Maximum number of load cell intervals (n _{LC})		3000	4000	
Ratio of minimum LC verification interval Y = E _{max} / v _{min}		10000	14000	
Combined Error	%FS	≤ ± 0.0200		≤ ± 0.0175
Minimum dead load	kg	0		
Safe overload	of E _{max}	150 %		
Ultimate overload	of E _{max}	300 %		
Zero balance	of FS	≤ ± 1.0 %		
Excitation, recommended voltage	V	5 ~ 12		
Excitation maximum	V	18		
Terminal resistance, input	Ω	430 ± 50		
Terminal resistance, output	Ω	351 ± 2		
Insulation impedance	MΩ	≥5000 (at 50VDC)		
Temperature range, compensated	°C	-10 ~ +40		
Temperature range, operating	°C	-35 ~ +65		
Element material		Stainless steel		
Ingress Protection (according to EN 60529)		IP67		
ATEX classification (optional)		II1G Ex ia II1C T4	II1D Ex iaD 20 T73°C	II3G nL IIC T4

Outline Dimensions in mm



Capacity	L	H	b	B	M
0.05t, 0.1t (0.05-0.3klb)	50.8 (2.00)	60.96 (2.40)	11.68 (0.46)	15.06 (0.59)	M8 (1/4-28UNF)
0.25t, 0.5t (0.5-1.5klb)	50.8 (2.00)	60.96 (2.40)	18.03 (0.71)	21.41 (0.84)	M12 (1/2-20UNF)
1t (2.2.5klb)	50.8 (2.00)	60.96 (2.40)	24.38 (0.96)	27.76 (1.09)	M12 (1/2-20UNF)
2.5t (3klb)	76.2 (3.00)	99.06 (3.90)	24.38 (0.96)	27.76 (1.09)	M20×1.5 (1/2-20UNF)
5klb	76.2 (3.00)	99.06 (3.90)	24.38 (0.96)	27.76 (1.09)	3/4-16UNF
5t (10klb)	74.68 (2.94)	99.06 (3.90)	30.74 (1.21)	34.12 (1.34)	M20×1.5 (3/4-16UNF)
7.5t (15klb)	87.38 (3.44)	139.7 (5.50)	37.08 (1.46)	40.46 (1.59)	M24×2 (1-14UNF)
10t (20klb)	112.78 (4.44)	177.8 (7.00)	42.93 (1.69)	46.31 (1.82)	M30×2 (5/4-12UNF)



Wiring:

- Shielded, 4 conductor cable.
- Cable: Ø5 mm.
- Standard cable length: 6m.
- Cable type and cable length for customer's own application are available on request.
- Shield not connected to element.

Please visit our website WWW.ZEMIC.NL for the most actual information

Nr. 2011.06 B3G Rev2